

F-12I FETAL MONITOR

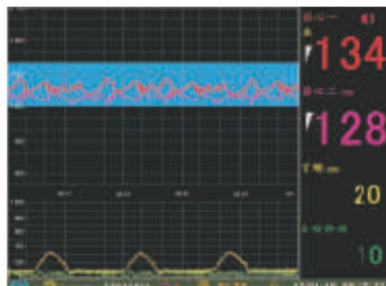


FEATURES

- 12.1" colorful LED display
- Flexible , light design , easy operation
- Flip-Screen from 0 to 90 degree , large font ,
- multi interfaces display
- 60 hours CTG storage , reviewing , print ,
- Power-fail data storage
- Simultaneously maternal and fetal parameters display
- Monitoring single fetus , twins and triplets(optional)
- Fetus Wakeup function (Optional)
- High quality LEMO connector

STANDARD PARAMETERS:

FHR , TOCO , FM



Standard Interface for three parameters: FHR, TOCO, FM



Big Font interface



High Capacity Lithium Battery 3.5Hours battery life



High quality LEMO Connector

FHR

Measurement range: 50 to 210
Normal range : 120 to 160 bmp
Alarm range :
Up limitation 160,170,180,190 bmp
bottom : 90 , 100 , 110 , 120 bmp

TOCO

0 to 100 Kpa

AFM

Remark time by hand
The effective interval should be in 5 seconds
Bandwidth 0.1 to 2.5 H

Curve Display

Curve line display supported by
American standard 30 ~ 240
International standard 50~210

Frequency

1.0 MHZ

Probe

12 crystals in probe
Wide-beam , multi-crystal water proof FHR probe , high sensitivity , stable signal detection
Flat surface waterproof TOCO pobe
Beam /soud intensity <5 mw/cm2

Optional Parameters

NIBP

Measurement range:
Systolic pressure 6.7 ~ 32 kpa(50 ~ 240 mmHg)
Average pressure 3.4 ~ 26.6 kpa(22 ~ 200 mmHg)
Diastolic pressure 2 ~ 24 kpa (15 ~ 180 mmHg)
Accuracy ± 1.1 kpa (± 8 mmHg or $\pm 5\%$ of reading)

Ultrasonic Intensity

Less than 5 mw/cm2

Alarm& Data

Audible and visual alarming ,
50 groups alarm events reviewing
60 hours CTG storage ,
power failure data storage
Fischer Analysis results automatically

Battery

Built-in rechargeable lithium battery,
3.5 hours for battery life

Bulid-in Thermal Printer

150/152mm wide paper ,
compatible with American/International standard
25 mm/s high speed playback
and print function

Work Environment

Operating Temperature (5°to 40°C)
Storage Temperature (-10°to 55°C)
Operating Humidity less than 85 %

Power Requirement

Voltage AC110-240V,50/60HZ

SPO2

Measurement range 70% ~ 99 %
Accuracy $\pm 3\%$

Pulse rate

Measurement range 30 bpm ~ 240 bpm
Accuracy ± 2 bmp